

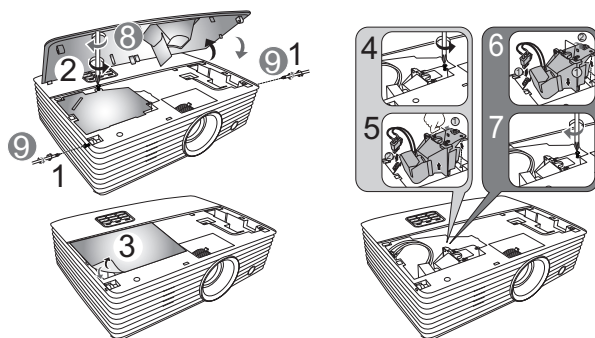
This instruction is only for profession maintainer. End user should contact retailer or acer local service center for lamp replacement.

## Replacing the Lamp

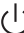
The projector will detect the lamp life itself. It will show you a warning message **"Lamp is approaching the end of its useful life in full power operation. Replacement Suggested!"**

When you see this message, change the lamp as soon as possible. Make sure the projector has been cooled down for at least 45 minutes before changing the lamp.

**WARNING:** Lamp compartment is hot! Allow it to cool down before changing lamp!



To remove the lamp:

Turn the projector off by pressing  (POWER). Allow the projector at least 45 minutes to cool down. Disconnect the power cord.

- 1 Use a screwdriver to remove the screw(s) from the cover. (Illustration #1)
- 2 Push up and remove the cover.
- 3 Use a screwdriver to remove the screw from the inner cover. (Illustration #2)
- 4 Remove the lamp protection film. (Illustration #3)
- 5 Remove the screw that secures the lamp module (Illustration #4).
- 6 Disconnect the lamp connector from the projector. Lift the handle so that it stands up. Pull out the lamp module by force (Illustration #5).

To replace the lamp module, use a new lamp and reverse the above steps (Illustrations #6- #9 ).

**WARNING:** To reduce the risk of personal injury, do not drop the lamp module or touch the lamp bulb. The bulb may shatter and cause injury if it is dropped.